

MIDDLE TN NURSERY EXTENSION

nursery e-news



Fig. 5: Underside of okra leaf with adult *Amrasca biguttula* with visible spots (above), and immature *Amrasca biguttula* without visible spots (below). USDA photo by Amy Roda.

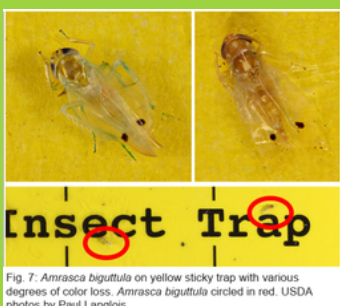


Fig. 7: *Amrasca biguttula* on yellow sticky trap with various degrees of color loss. *Amrasca biguttula* circled in red. USDA photos by Paul Langlois.

Photos from ID Guide (link below)

Two-Spotted Cotton Leafhopper



TEXAS QUARANTINE ON TWO-SPOTTED COTTON LEAFHOPPER (*Amrasca biguttula*)

- Texas implemented an emergency quarantine on shipments into TX from several southeastern states, including TN, of host plants (10/02/25).
- Plant shipments into TX must either have a state phytosanitary certificate or a compliance agreement. Check with your TDA plant inspector for the full list of host plants and more details.
- Cotton jassid has a fairly broad host range primarily within the families Malvaceae, Fabaceae, Asteraceae, and Solanaceae. This includes cotton, okra, peanuts, soybeans, sunflowers, eggplant, potato, and many ornamental plants.
- Visit the site at left for details on how to identify the pest.

LOOKING FOR HELP IN PLANNING YOUR FARM MANAGEMENT OR BUSINESS PLAN?

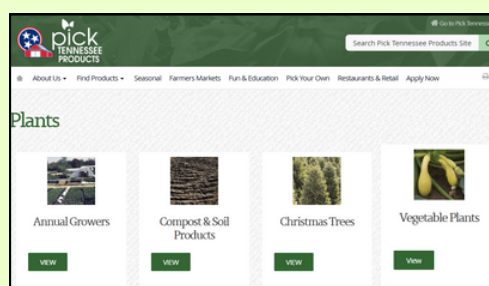
Meet: Rachel Painter

- Rachel Painter works with UT's Center of Farm Management and the MANAGE Program as a Farm Management Specialist who helps producers analyze their total farming business to make informed decisions and develop individualized farm and financial plans. Rachel works with producers of specialty crops (includes nursery and greenhouse).
- Contact info: rpainter@utk.edu or 615-478-5838 (from: [UT Profile](#))



PICKTN BUSINESS LISTS

- Did you know TDA's 'Pick TN Products' has a website of ag businesses by category. The 'Plants' page has links to various product types, which lists businesses and their locations. Another way to promote your business and/or find TN ag businesses!



Screenshots of website



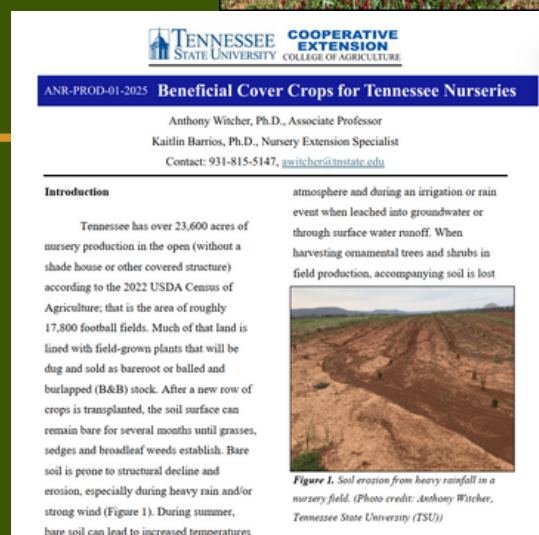
nursery e-news

NEW FACTSHEET!

“Beneficial Cover Crops for Tennessee Nurseries”

- Check out our new factsheet on why and how to use cover crops in nursery row middles and fallow land
- Includes recommended plant species and seeding rates trialed by Dr. Anthony Witcher's lab

Factsheets from NRC



NURSERY CO-OWNER POSITION VACANCY

- Jason Young is seeking a co-owner for his native plant nursery near Nashville
- Ideally someone to help with sales, customer relations and expanding the company (would also be co-owner of company)
- Nursery grows and sells mostly perennials with some shrubs/trees; is also a registered arboretum
- Contact Jason Young for further information: 865-738-5432 or jasonsnativegarden@gmail.com

FOLLOW US ON FACEBOOK FOR UP-TO-DATE INFO AND NEWS



TSU's Otis L. Floyd Nursery Research Center

