

COORDINATED CARE UNITS

ACADEMIC ADVISING

*Hixson, *Honors, *TRIO SSS, *WiSE

ACADEMIC SUPPORT

Academic Coaching

*INTERNATIONAL STUDENTS

ISSO & College International Services

CAREER SERVICES

MULTICULTURAL STUDENTS

Directors of Multicultural Student Success, *Science Bound; STEM Scholars

PAYING FOR COLLEGE

Accounts Receivable & Financial Aid

*LIVING ON CAMPUS

STUDENT ASSISTANCE

STUDY ABROAD / NSE

College Study Abroad; Study Abroad Center; National Student Exchange

VETERAN STUDENTS

STUDENT WELLNESS

Dietitian, Wellbeing Coaching

*ATHLETICS

Student Athlete Development, Athletic Tutoring Services

STUDENT ACCESSIBILITY

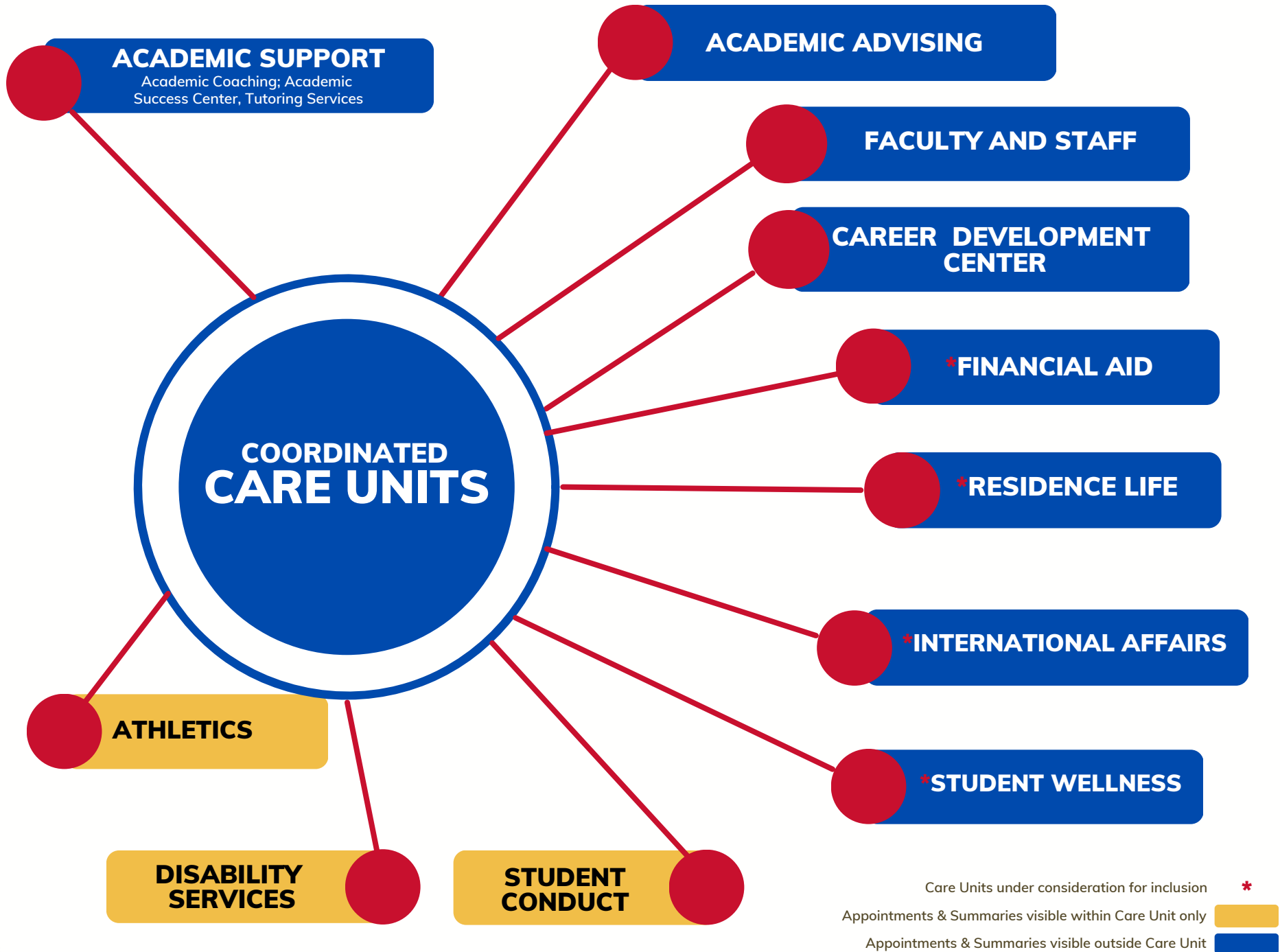
STUDENT CONDUCT

Visible only to specific student groups *

Appointments & Summaries visible within Care Unit only

Appointments & Summaries visible outside Care Unit

Tennessee State University's Coordinated Care Network



EAB NAVIGATE USER ACCESS TIERS

All Faculty and Staff with access to Navigate are **Tier I** by default. Tier II and Tier III privileges require additional training.

